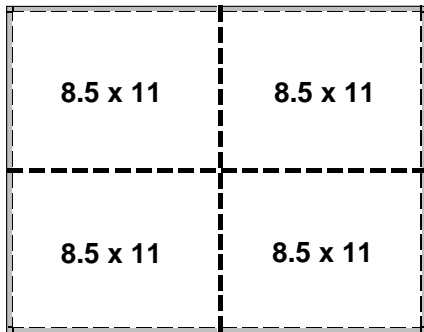


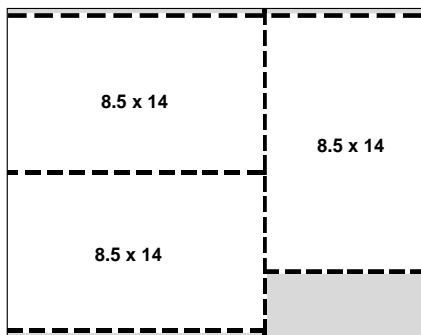


## Paper Trim Sizes

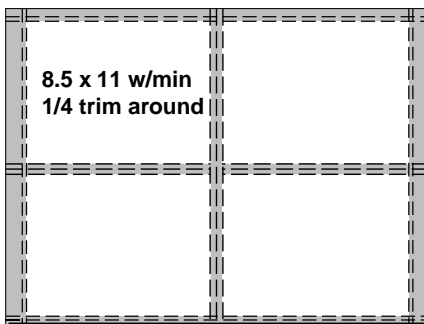
Many brands and weights of text and cover are available only in large (parent) sizes. The following diagrams show the cutting of common parent size sheets. When planning a run on a large press, or in figuring the number of parent sheets needed for a short run, utilizing paper efficiently can save you money and potential problems. Keep in mind that the trim allowance for bleeds and/or 4-color QC bars require a larger sheet. Please note: these drawings indicate the set-up pattern for each sheet and are not drawn to the same scale.



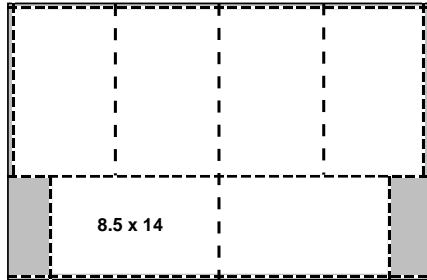
**17.5" X 22.5"** sheet yields four 8.5" x 11" or two 11" x 17" with minimal trim. Used for newsletters and 4-up 8.5" x 11" jobs such as letterheads and flyers. No room for color bars.



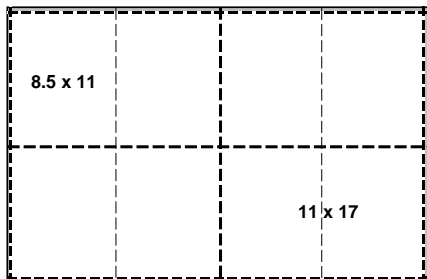
**17.5" X 22.5"** sheet yields three 8.5" x 14" legal size, with two sheets grain long and one grain short. When run as 'fronts and backs', care must be taken in stripping to produce the back as a mirror image. Cannot be run 'work and turn' or 'work and tumble'. Trim piece makes a nice long style scratch pad.



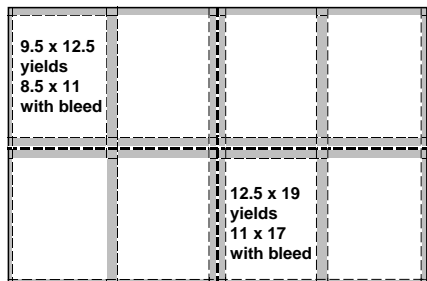
**19" X 25"** sheets are used for four 8.5" x 11" or two 11" x 17" with bleed. Enough room is available for 1/4" wide color test bars to run at the tail of the sheet for quality control on press.



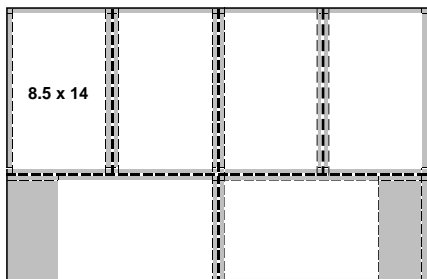
**23" X 35"** sheet yields six 8.5" x 14" legal size sheets with minimal scrap. Note the bottom two sheets will have the opposite grain direction compared to the top four. If text weight stock, they must be kept separate for folding. If cover weight, they must be scored or only the top four can be used for folding.



**23" X 35"** sheet yields four 11" x 17" or eight 8.5" x 11". Grain is generally long (35") which provides good letterfold for 8.5" x 11" letter and good fold for 8.5" x 11" to 5.5" x 8.5" for booklet cover or invitation. Wrong grain direction for 11" x 17" to 8.5" x 11" fold. For covers, either specify grain short stock (if available) or plan on score prior to folding.



**25" X 38"** sheet yields four 11" x 17" or eight 8.5" x 11" with room for bleed. Grain is generally long (38") providing a good letterfold for 8.5" x 11" letter and good fold for 8.5" x 11" to 5.5" x 8.5" for booklet cover or invitation. Wrong grain direction for 11" x 17" to 8.5" x 11" fold. Plan on score to fold. Also used without bleed for 6" x 9" booklets.



**25" X 38"** sheet yields six 8.5" x 14" legal size sheets with bleed. Note the bottom two sheets will have the opposite grain direction compared to the top four. If text weight stock, it must be kept separate for folding. If cover weight, they must be scored or only the top four can be used for folding.